



Proficiency Asset Health Center

Intelligent fleet management for your critical assets

Features

- Intuitive web visualization
- High-speed Proficiency Historian
- AHC-specific ISA-95 asset data model
- Alarm, analytic, advisory and event service

Benefits

- Accessible to all users worldwide with a standard Internet connection
- Secure – access is properly controlled based on user rights
- Fast time to solution – Model-driven visualization requires no coding; model configuration only
- Excellent platform for service providers to extend their domain expertise and service portfolio to their end customers
- Advanced analytic option increases asset uptime while reducing cost and risk

An Integrated Proficiency Solution

Proficiency Asset Health Center (AHC) is an integrated packaged solution from GE Intelligent Platforms that provides intelligent fleet management by allowing operational visibility into your fleet of assets over a standard Internet connection. Tightly coupling an asset data model with near real-time visualization and historical trending, AHC displays actionable information in a timely and collaborative fashion, leading to higher productivity and faster decisions.

AHC allows you to visualize model-driven data instantaneously, including web-based trending and alarm and event aggregation from plant to enterprise.

Web based visualization

AHC features an easy-to-use, model-driven, web-based visualization environment, which requires no coding and provides timely asset information management functions such as current equipment status, historical trending, and reporting. You can view fleet statistics; create and save analysis sessions

and reports as “Favorites” for immediate recall; and sort, filter, analyze, acknowledge, and clear alerts, alarms and events.

Alarm and Event Service

AHC includes an alarm, analytic, advisory and event service comprised of an industrial-strength Alarm and Event (A&E) data store and subscription service, allowing for instant analysis, acknowledgement, and information sharing and collaboration among colleagues.

Proficiency Advanced Analytics

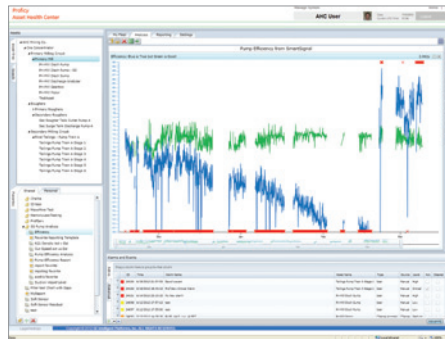
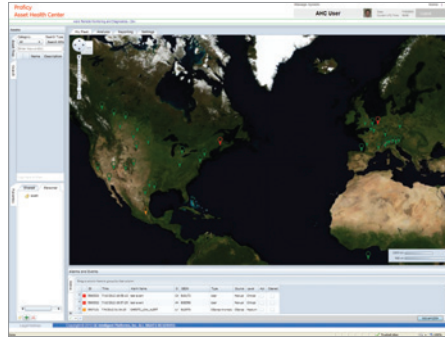
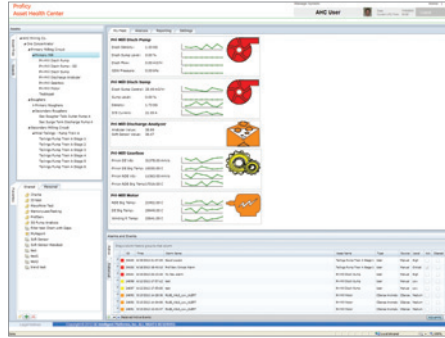
The Proficiency Advanced Analytics (PAA) option to AHC allows you to pinpoint causes of performance variation, optimize processes, and enhance asset performance, while maximizing your capital investment. Alerts and anomalies detected by PAA are sent, viewed, acknowledged and cleared as events in the AHC A&E data store. Advisories are visualized in AHC to guide a subject matter expert on the next steps to take to improve equipment performance and health.



Proficy Asset Health Center – An integrated packaged solution

AHC Features

- The asset navigation tree displays a hierarchical representation of Enterprise, Sites, Areas, Process Cells and Units
- The Search window allows you to display and select specific Fleet assets and/or KPIs, and can be used as a drag/drop source when you are monitoring and analyzing asset and alarm data
- Fleet / line-up views with geographic and/or summary level statistics for specific process cells
- Asset detail view, providing current equipment and Key Performance Indicators
- Historical trending environment with a rich tool set, allowing you to customize each session in order to make sense of your data
- Reporting, where you create, generate, and save reports, import data into a report, and save a report as a favorite
- Alarm subscription service
- Alarm and event aggregation service
- Favorites, allowing you to save specific Analysis and Report layouts in either a personal or shared space
- System and User Management/ Administration



System Requirements

Each hosting environment may vary based on data collection, storage, security, and other requirements. Please consult with your GE Intelligent Platforms Professional Services team as your specific implementation needs may vary.

Server Software Requirements:

- Microsoft® Windows® Server 2008 R2 (64-bit) Standard
- Microsoft Internet Information Services (IIS) 7.5
- Microsoft Office® Excel® 2007 or greater (Enterprise)
- Microsoft SQL Server® 2008 R2 Standard (64-bit)

About GE Intelligent Platforms

GE Intelligent Platforms is a division of GE that offers software, control systems, services, and expertise in automation and embedded computing. We offer a unique foundation of agile and reliable technology providing customers a sustainable competitive advantage in the industries they serve, including energy, water, consumer packaged goods, oil and gas, government and defense, and telecommunications. GE Intelligent Platforms is headquartered in Charlottesville, VA. For more information, visit www.ge-ip.com.

GE Intelligent Platforms Contact Information

Americas: **1 800 433 2682** or **1 434 978 5100**

Global regional phone numbers are listed by location on our web site at www.ge-ip.com/contact

www.ge-ip.com

